

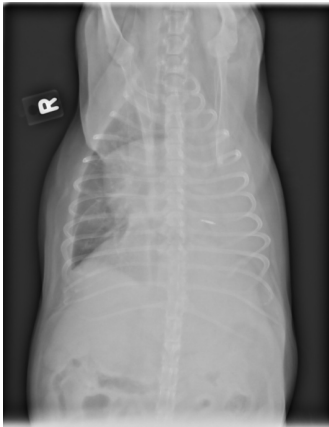
Presents:

HYPERBARIC OXYGEN THERAPY

Examples of HBOT Enhancing Treatment & Care

Severe Effusive Canine Pancreatitis
Associated with Progressive Pleural Fluid
Treated for 14 days with standard, conservative therapy
prior to referral for Hyperbaric Oxygen Therapy

Pre Hyperbaric Oxygen Therapy



Post Hyperbaric Oxygen Therapy



**In addition to standard supportive therapy,
Hyperbaric Oxygen Therapy (HBOT) was given at 1.5 ATA for 1 hour on:**

- Day 1 twice daily**
- Day 2 twice daily**
- Day 3 twice daily**
- Day 4 twice daily**

PLEASE CALL

914-737-2437